

shepherds
A better home
moving experience



39 Turpins Close

Hertford, SG14 2EH

Guide Price £360,000



39 Turpins Close

Hertford, SG14 2EH

Offered chain free, this two-bedroom terraced home is set within a popular cul-de-sac and benefits from an allocated parking space.

The ground floor features a bright living/dining room with direct access to the rear garden, along with a separate fitted kitchen. Upstairs are two good-sized bedrooms, served by a family bathroom.

Outside, the rear garden is mainly laid to lawn with a patio seating area, providing an easy-to-maintain outdoor space.

Turpins Close is ideally positioned within easy reach of Hertford North Station, Hertford's town centre with its excellent range of shops, bars, and restaurants, as well as the open green spaces of Panshanger Park.

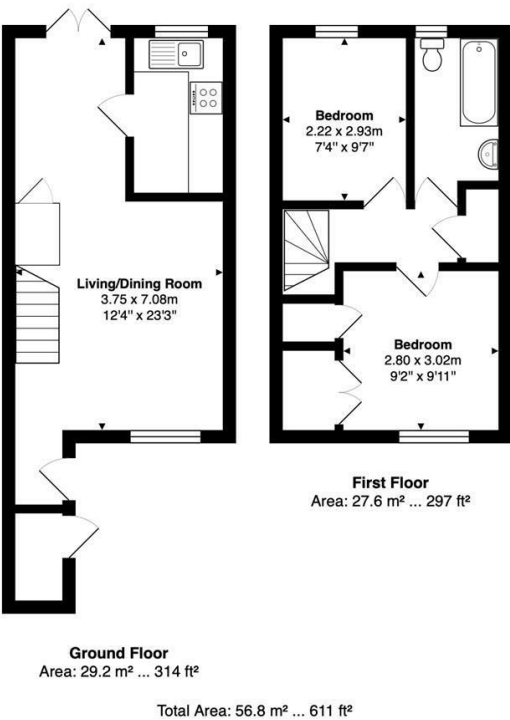




- Chain free
- Two good-sized bedrooms
- Living/dining room with garden access
- Allocated parking space
- Rear garden mainly laid to lawn with patio area
- Convenient for Hertford North Station, Hertford Town Centre & Panshanger Park

TURPINS CLOSE, HERTFORD,
HERTS, SG14 2EH

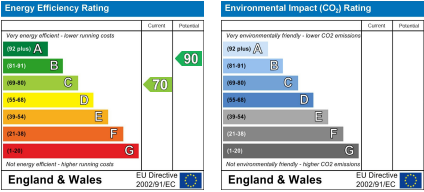
Floor Plan



Viewing

Please contact Shepherds of Hertford on 01992 551955 if you wish to arrange a viewing appointment for this property or require further information.

Energy Performance Graph



These particulars, whilst believed to be accurate are set out as a general outline only for guidance and do not constitute any part of an offer or contract. Intending purchasers should not rely on them as statements of representation of fact, but must satisfy themselves by inspection or otherwise as to their accuracy. No person in this firm's employment has the authority to make or give any representation or warranty in respect of the property.

Riverside House, 6 Millbridge, Hertford, SG14 1PY
Tel: 01992 551955 Email: enquiries@shepherdsofhertford.co.uk